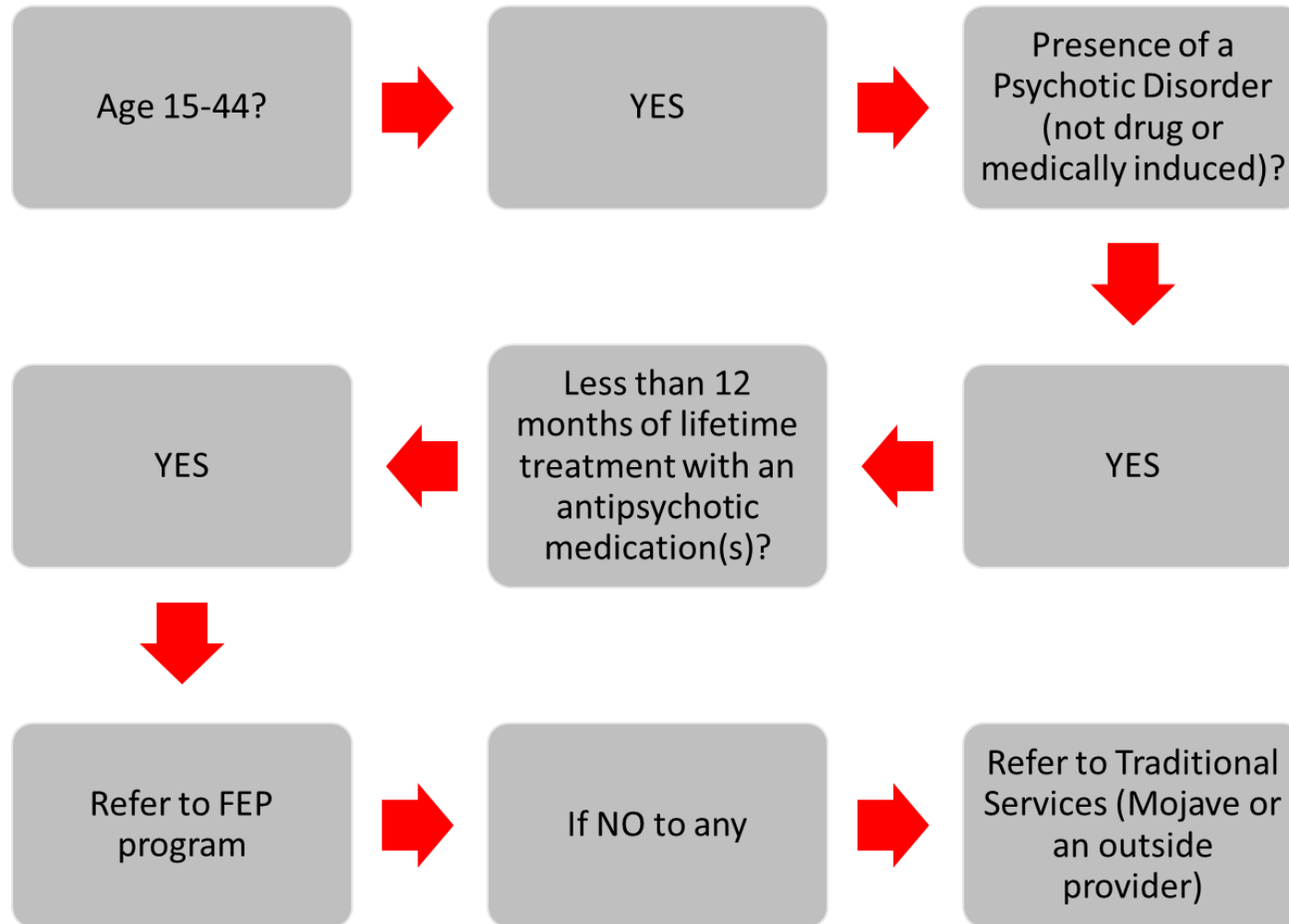


# First Episode Psychosis (FEP) Program

Las Vegas, NV

# FIRST EPISODE PSYCHOSIS (FEP): Phone Screening



## Intake Process

- ▶ Receive Referral (individual; family; hospital; organization)
- ▶ FEP phone screening is completed with client or client's guardian
- ▶ Client completes the registration and enrollment process with UNLV Health-Mojave Counseling
- ▶ Psychosocial Assessment completed
- ▶ Psychological Evaluation completed
- ▶ Initial Medication Management appointment completed
- ▶ FEP services are initiated (Family Education; Individual Resiliency Training; Case Management; Supported Employment and Education)

# Deliverables

Deliverables	Frequency
<b>SCID (Structured Clinical Interview for DSM Disorders )</b> Overview SCID-5-RV Scoresheet Standard Screening A. Mood Episodes w/o Specifiers B. Psychotic Screening Module B/C. Psychotic Screening Module C. Psychotic Differential D. Mood Disorders E. Substance Use Disorders F. Anxiety Disorders G. Obsessive Compulsive and Related Disorders H. Sleep-Wake Disorders	Baseline/Yearly
<b>WRAT-5 (Wide Range Achievement Test)</b> Word Reading Subtest Sentence Comprehension Subtest	Baseline/Yearly
<b>WASI-II (Wechsler Abbreviated Scale Intelligence)</b>	Baseline/Yearly
<b>WAIS-IV (Wechsler Adult Intelligence Scale)</b>	Baseline/Yearly

## Deliverables (cont.)

<b>Deliverables</b>	<b>Frequency</b>
<b>SOFAS (Social and Occupational Functioning Assessment Scale)</b>	Baseline/Yearly
<b>WHODAS (World Health Organization Disability Assessment Schedule)</b>	Baseline/Yearly
<b>RA1SE (Recovery After an Initial Schizophrenia Episode)</b> Wellbeing Mental Health Recovery Autonomy Support Medication-Influence Beliefs Stigma Globals Family Assessment Scale	Every 3 months
<b>SUMD (Scale to Assess Unawareness of Mental Disorder)</b>	Every 6 months
<b>Psychopharmacology</b> Patient Self-Rating form: RX related Clinician Rating Form: RX-related Nurse Assessment Prescriber Review	Monthly
Med Hx	Baseline only